

Lumic Calibration Kit For the Model 30 & Model 3000 Series

Part Number: 4519-865

Features

- Simplifies Reading & Writing Parameters
- Wizards for Calibration and Plateau Steps
- Includes Both Software Versions, 2 Cables, and Manuals

Introduction

Lumic Calibration Software is a useful tool that allows the reading and writing of important parameters via a USB port in the Model 3000 Series and the Model 30 family of instruments. Instrument parameters may be loaded or saved to files, and an instrument parameter report may be printed. The software also allows streaming and viewing of current readings and measurements of the instrument. All streamed readings and measurements are time stamped and may be saved to a CSV file for later viewing.

Two "wizard" features include a gamma exposure/dose calibration routine and an automatic plateau. The calibration routine wizard leads the user through calibration steps. The plateau wizard automatically records data at different detector voltages once the initial settings are input to determine the correct voltage for operation.

Specifications

KIT INCLUDES:

- Lumic Calibration Software versions 1.0 and 2.0
- 2 m (6 ft.) USB-A to USB-A cable for Model 3000 Series
- 2 m (6 ft.) USB-A to USB-Mini-B cable for Model 30 Family
- Manuals

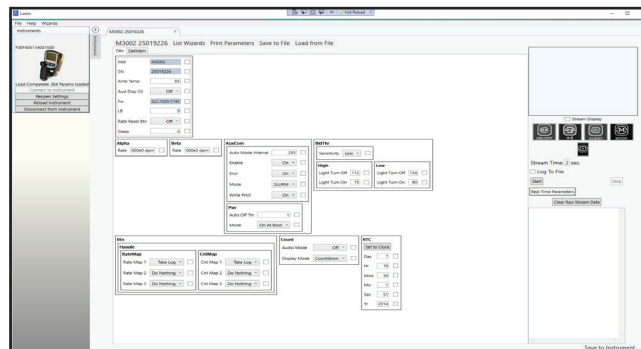
SOFTWARE REQUIREMENTS:

- Windows 7 or higher operating system (32-bit and 64-bit versions)
- Microsoft .NET Framework 4.5 (installed on most machines by default)
- Intel or compatible 1 GHz or faster processor (2 GHz or faster is recommended)
- Minimum of 256 MB of RAM (1 GB or more is recommended)
- 60 MB of free hard disk space

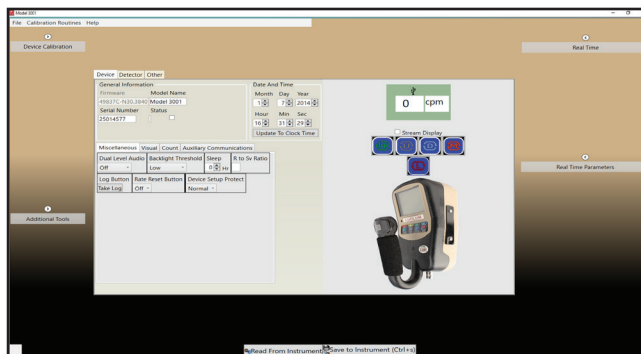
See the table below for the firmware requirements and the software version that can be used with each instrument.

Software Version	Compatible Models	Required Firmware
Lumic 1.0	30, 30-4, 30-6, 30-7, 35, 79	2.x or lower
	3000, 3001, 3005, 3006, 3019, 3276	N34 or lower
	3002, 3277	N12 or lower
Lumic 2.0	30, 30-4, 30-6, 30-7, 35, 79	3.x or higher
	3000, 3001, 3005, 3006, 3019, 3192, 3276	N40 or higher
	3002	N20 or higher
	3003, 3004, 3007, 3014, 3078	N/A

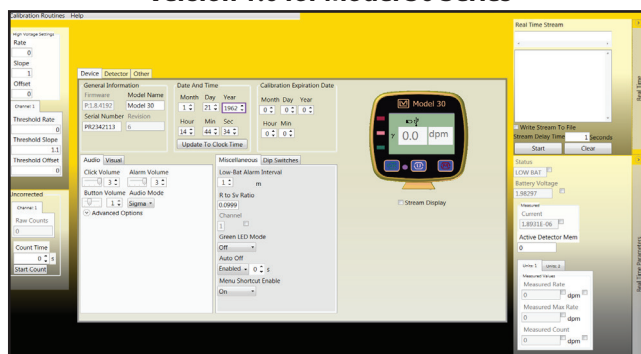
Version 2.0 for Model 3000 Series



Version 1.0 for Model 3000 Series



Version 1.0 for Model 30 Series



Note: All new instruments listed in the table at left will be compatible with software version 2.0. For users with older instruments and who wish to use version 2.0, the latest firmware for each instrument is available for free to download from our website.