

## **Model 9-7 Ion Chamber Detectors**

### **Features**

- Detects Beta and Gamma Radiation
- Fits the Ludlum Model 9-7 Ion Chamber Ratemeter
- Removable Beta Shield



**Model 9-7-BLD**



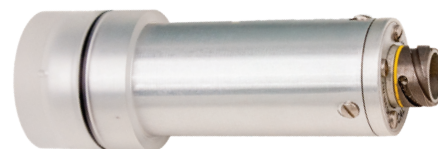
**Model 9-7 with Detector**



**Model 9-7-BHL-1**



**Model 9-7-BM**



**Model 9-7-BH**

### **Detectors**

<b>Model</b>	<b>9-7-BLD</b>	<b>9-7-BHL-1</b>	<b>9-7-BM</b>	<b>9-7-BH</b>
<b>Part Number</b>	47-3693-1	47-3882-1	47-3694	47-3696
<b>Range</b>	0.001 to 1.999 R/hr	0.01 to 19.99 R/hr	0.1 to 199.9 R/hr	0.01 to 19.99 kR/hr
<b>Resolution</b>	0.001 R/hr (1 mR/hr)	0.01 R/hr (10 mR/hr)	0.1 R/hr (100 mR/hr)	0.01 kR/hr (10 R/hr)
<b>Linearity</b>	± 10 %			
<b>Ion Chamber</b>	aluminum housing, plastic lined thin entry window filled with air at atmospheric pressure; aluminum housing thickness nominally 1.5 mm (0.060 in.); acrylic thickness nominally 3.2 mm (0.13 in.)			
<b>Active Chamber Volume</b>	50 cm <sup>3</sup> (3.1 in <sup>3</sup> )	7 cm <sup>3</sup> (0.43 in <sup>3</sup> )	7 cm <sup>3</sup> (0.43 in <sup>3</sup> )	7 cm <sup>3</sup> (0.43 in <sup>3</sup> )
<b>Window</b>	7 mg/cm <sup>2</sup> aluminized Mylar			
<b>Beta Shield</b>	removable acrylic shield, approximately 9 mm thick			
<b>Temperature Range</b>	-20 to 50 °C (-4 to 122 °F)			
<b>Humidity</b>	0 to 90%, non-condensing			
<b>Size (Dia. x L)</b>	4.5 x 22.1 cm (1.75 x 8.7 in.) including beta shield	4.8 x 14 cm (1.9 x 5.5 in.) including beta shield	4.8 x 14 cm (1.9 x 5.5 in.) including beta shield	4.8 x 14 cm (1.9 x 5.5 in.) including beta shield
<b>Weight</b>	0.3 kg (0.7 lb) including beta shield	0.18 kg (0.40 lb) including beta shield	0.18 kg (0.40 lb) including beta shield	0.18 kg (0.40 lb) including beta shield

**Ludlum Measurements, Inc.** P.O. Box 810, Sweetwater, Texas 79556

**Web:** ludlums.com **Tel:** 800-622-0828 / 325-235-5494 **Fax:** 325-235-4672 **Email:** sales@ludlums.com

Note: specifications subject to change without notification. We are not responsible for errors or omissions.