

# **LUDLUM MODEL 271-2 REMOTE**

**July 2025**

**Serial No. 244365 and succeeding**

# **LUDLUM MODEL 271-2 REMOTE**

**July 2025**

**Serial No. 244365 and succeeding**



**LUDLUM MEASUREMENTS, INC**  
501 OAK STREET, P.O. BOX 810  
SWEETWATER, TEXAS 79556  
325-235-5494, FAX: 325-235-4672

## **STATEMENT OF WARRANTY**

Ludlum Measurements, Inc. warrants the products covered in this manual to be free of defects due to workmanship, material, and design for a period of twelve months from the date of delivery. The calibration of a product is warranted to be within its specified accuracy limits at the time of shipment. In the event of instrument failure, notify Ludlum Measurements to determine if repair, recalibration, or replacement is required.

This warranty excludes the replacement of photomultiplier tubes, G-M and proportional tubes, and scintillation crystals which are broken due to excessive physical abuse or used for purposes other than intended.

There are no warranties, express or implied, including without limitation any implied warranty of merchantability or fitness, which extend beyond the description of the face there of. If the product does not perform as warranted herein, purchaser's sole remedy shall be repair or replacement, at the option of Ludlum Measurements. In no event will Ludlum Measurements be liable for damages, lost revenue, lost wages, or any other incidental or consequential damages, arising from the purchase, use, or inability to use product.

## **RETURN OF GOODS TO MANUFACTURER**

If equipment needs to be returned to Ludlum Measurements, Inc. for repair or calibration, please send to the address below. All shipments should include documentation containing return shipping address, customer name, telephone number, description of service requested, and all other necessary information. Your cooperation will expedite the return of your equipment.

**LUDLUM MEASUREMENTS, INC.  
ATTN: SERVICE DEPARTMENT  
501 OAK STREET  
SWEETWATER, TX 79556**

**800-622-0828    325-235-5494  
FAX 325-235-4672**



TABLE OF CONTENTS

1. INTRODUCTION .....	1
2. DRAWINGS AND DIAGRAMS .....	1



## Introduction

---

The Model 271-2 Remote is a remote status instrument for use with Ludlum Model 375P Radiation Detection Systems. The Model 271-2 displays the status of the Model 375P to which it is connected. Indicators include STATUS OK, ALARM-CHANNEL 1, ALARM-CHANNEL 2 and DETECTOR FAIL. An AUDIO ENABLE ON/OFF switch is provided for control of the remote audio output. A RESET pushbutton is provided in order to reset the latched alarm. Power is provided by the Model 375P.

## Drawings and Diagrams

---

MAIN BOARD AND CHASSIS, Drawing 238 × 112

MAIN BOARD COMPONENT LAYOUT, Drawing 238 × 113

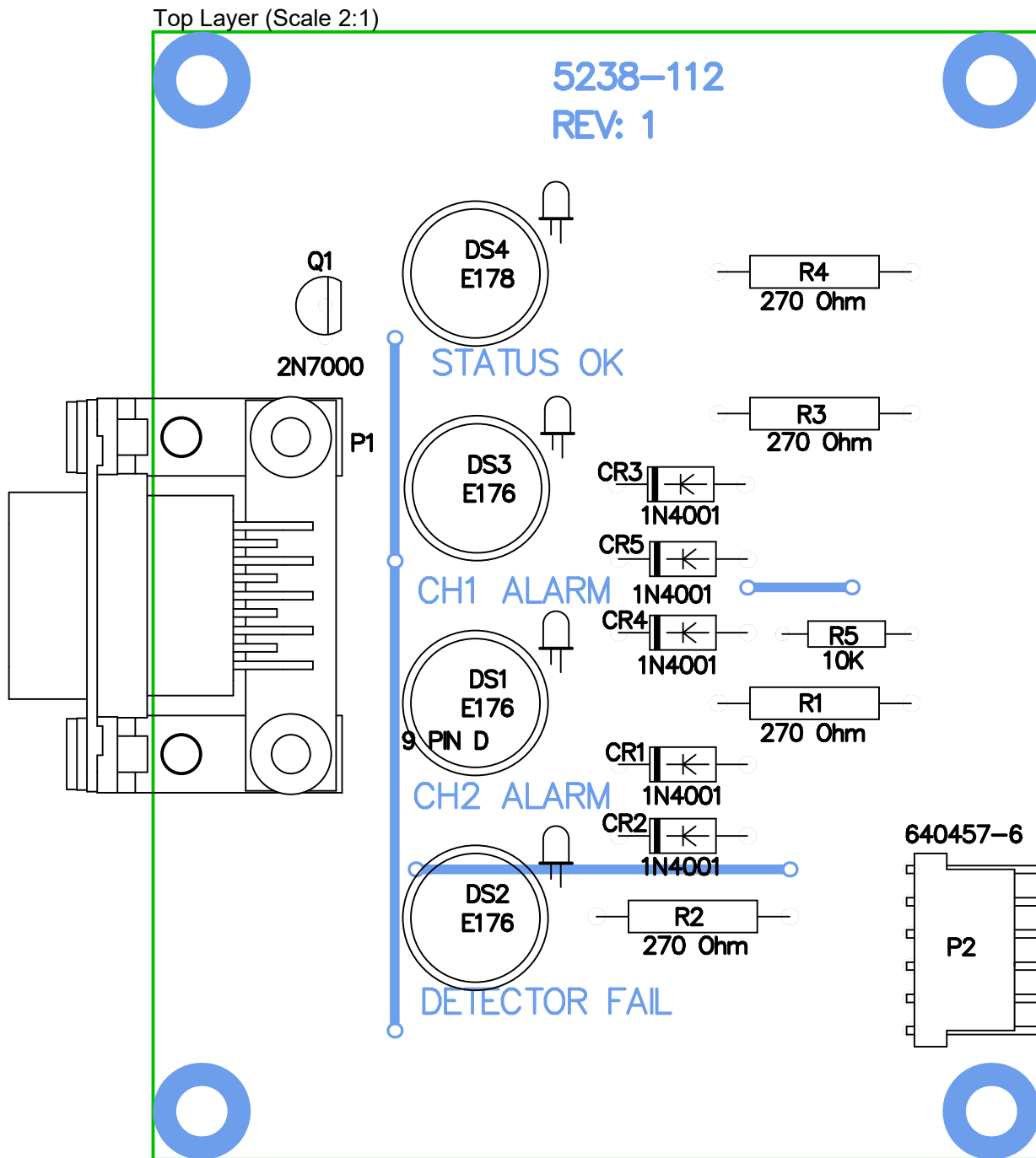
MODEL 271-2 HARNESS, Drawing 238 × 118

MODEL 271-2 OVERALL, Drawing 238 x 115


M 271-2 WIRE-UP, Drawing 238 × 115A



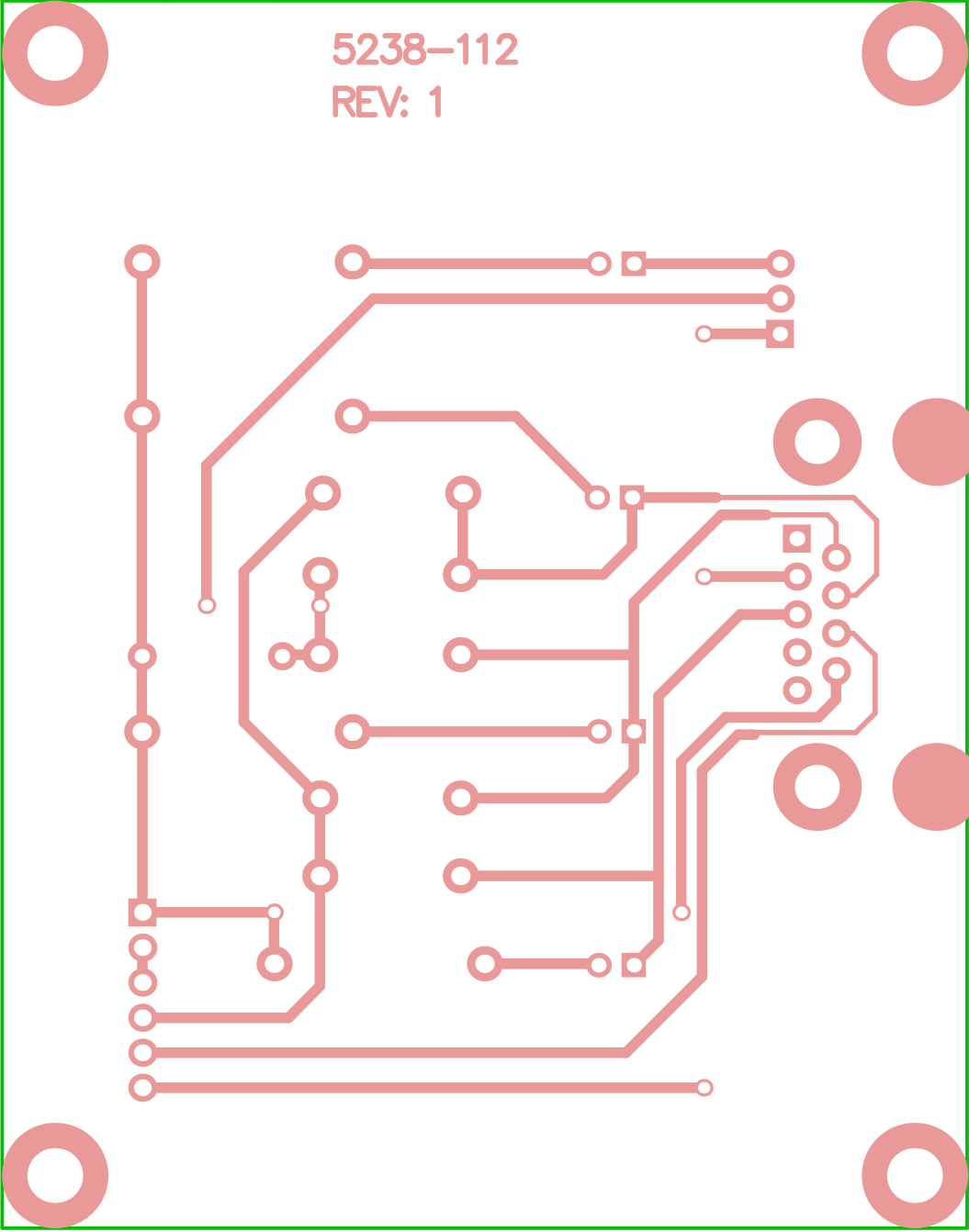





Note:  
DS1, DS2, DS3 & DS4 are not placed.  
Scalers will install LEDs

 LUDLUM MEASUREMENTS					
Part: 5238-112			Model: 271-2		
Desc: MAIN BOARD					
Design: RSS		Date: 12/15/05		Rev:	1
Drawn: PAB		Date: 7/14/2025	SHEET	SERIES	SHEET
Apr: JMC		Date: 7/15/2025	1 of 3	238	113
W:\Projects\LM\IM 271-2\5238-112\Rev1					

Bottom Layer (Scale 2:1)



 <b>LUDLUM MEASUREMENTS</b>				
Part: 5238-112		Model: 271-2		
Desc: MAIN BOARD				
Design: RSS	Date: 12/15/05	Rev:	1	
Drawn: PAB	Date: 7/14/2025	SHEET	SERIES	SHEET
		2 of 3	238	113
W:\Projects\LM\IM 271-2\5238-112\Rev1				

REV #	ALTERATIONS	DATE	BY
1	VALID	1-21-06	CMC

STRIP/TIN

1 5

STRIP/TIN

3

4

5

STRIP/TIN  
CRIMP ON  
#6 FORK LUGS  
18-8865


2

WIRES #26 GA  
WIRE #1-RED  
WIRE #2-BLK  
WIRE #3-BLUE  
WIRE #4-BLK  
WIRE #5-WHT/RED

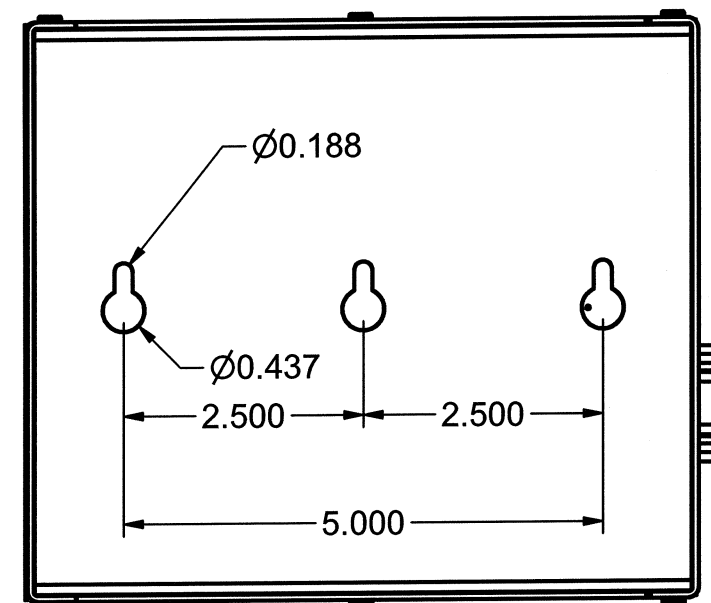
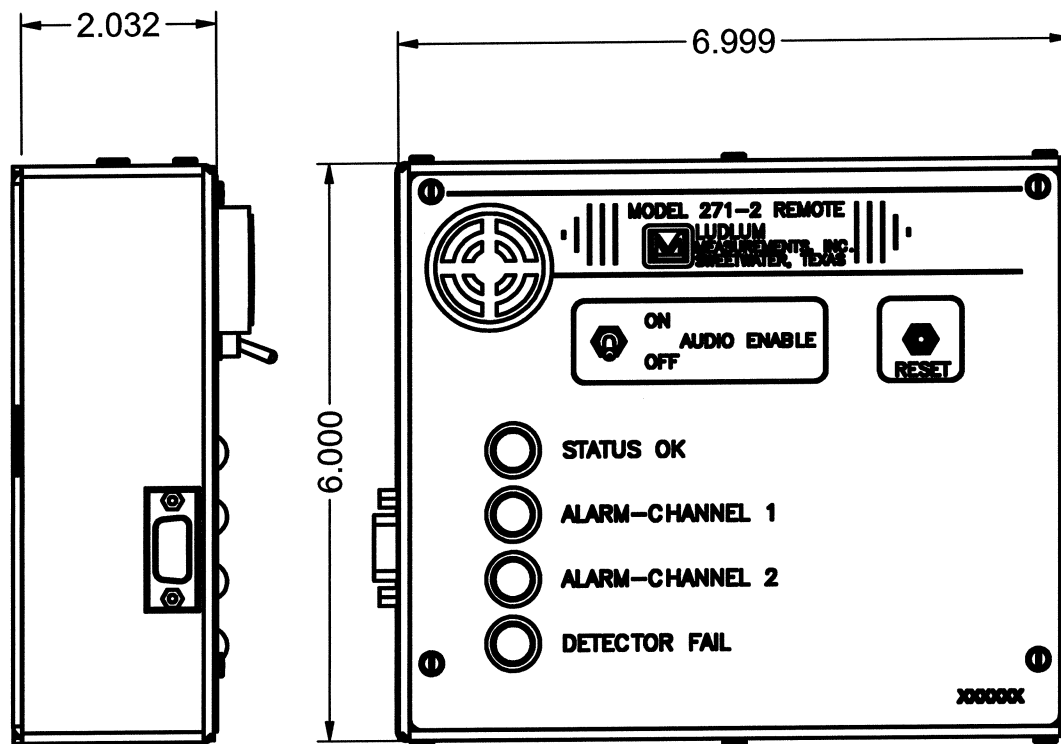
CRIMP ON CONNECTOR  
#13-8171 6P MTA100  
6 PIN CONNECTOR  
PINS UP!

1  
NC  
NC  
3  
4

PIN 1-WIRE #1  
PIN 2-NC  
PIN 3-NC  
PIN 4-WIRE #2  
PIN 5-WIRE #3  
PIN 6-WIRE #4

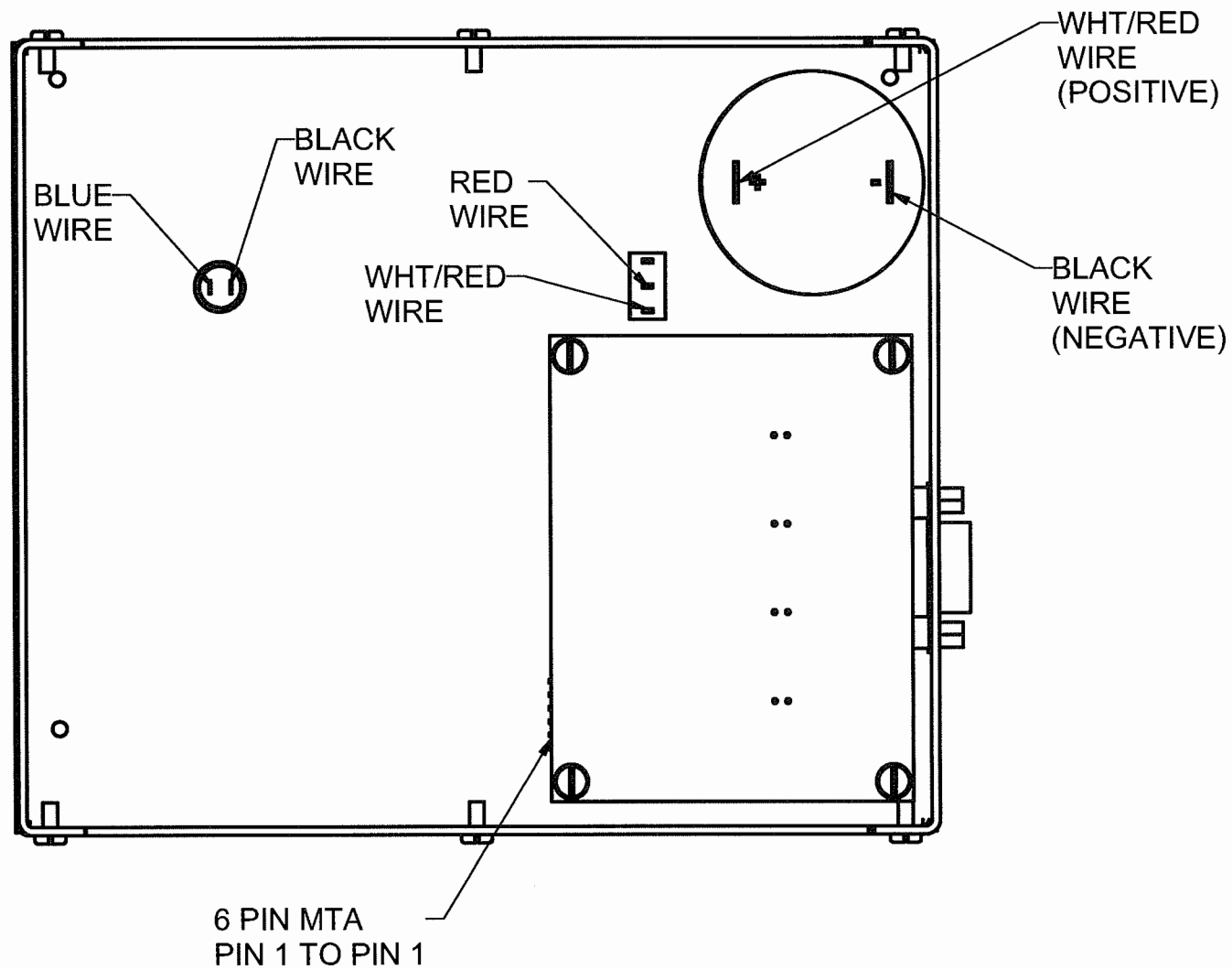
DWN	DATE	CHK	DATE	APP	DATE
CMC	1-21-06				1-21-06
DWG NUM	8238-118	SCALE	FULL	IS	OTHER
TITLE	M 271-2 HARNESS	SERIES	238	SHEET	118
 LUDLUM MEASUREMENTS, INC. 301 DINK STREET SWEETWATER, TEXAS 75556					

REVISION HISTORY			
REV	DESCRIPTION	DATE	BY
1	VALID	1/23/2006	CMC
2	ADDED JACKSCREWS	07/06/2010	PW



DWN	DATE	CHK	DATE	APP	DATE
CMC	2-7-06			<i>PW</i>	7-6-2010
DWG NUM: 4238-115					SCALE: FULL <input type="checkbox"/> OTHER <input type="checkbox"/>
TITLE M 271-2 REMOTE FOR M 375P					
	LUDLUM MEASUREMENTS, INC. 501 OAK STREET SWEETWATER, TEXAS 79556			SERIES 238	SHEET 115

REVISION HISTORY			
REV	DESCRIPTION	DATE	BY
1	VALID	1/23/2006	CMC
2	ADDED JACKSCREWS	07/06/2010	PW



DWN	DATE	CHK	DATE	APP	DATE
CMC	1-21-06			PW	7-6-2010
DWG NUM: 4238-115					SCALE: FULL <input type="checkbox"/> OTHER <input type="checkbox"/>
TITLE M 271-2 WIRE-UP					
LUDLUM MEASUREMENTS, INC. 501 OAK STREET SWEETWATER, TEXAS 79558			SERIES 238	SHEET 115A	